



# Flight Plan & Site Survey

Created using **RPAS Wilco**®

Reference No:	32514A
Title:	VRCAS-Village Green
Pilot Name:	
Pilot Certificate:	
Flight Start:	February 11, 2025 5:16 PM
Flight End:	February 11, 2025 7:16 PM
Flight Area (Latitude):	50° 17' 3.00" N ( 50.284 )
Flight Area (Longitude):	119° 16' 9.20" W ( -119.269 )
Altitude - Radius:	<b>Alt:</b> 400 ft - <b>Rad:</b> 926.0 m ( 0.5 nm)
Classification:	CERT
FIR - Contact:	CZVR - 604-586-4500

## Notes:

Your flight is within 3NM of a certified aerodrome or 1NM of a certified heliport.  
Please comply with Transport Canada established procedure as found in TC AIM RPA 3.4.5. (CARs 901.73)

Please ensure you received all required authorizations prior to flight.

## Disclaimer

This Site Survey was created using RPAS Wilco by AIM Robotics. The flight plan contained is intended only for RPAS flights on the date/time and location specified. The user accepts all responsibility for the accuracy and completeness of the information contained.

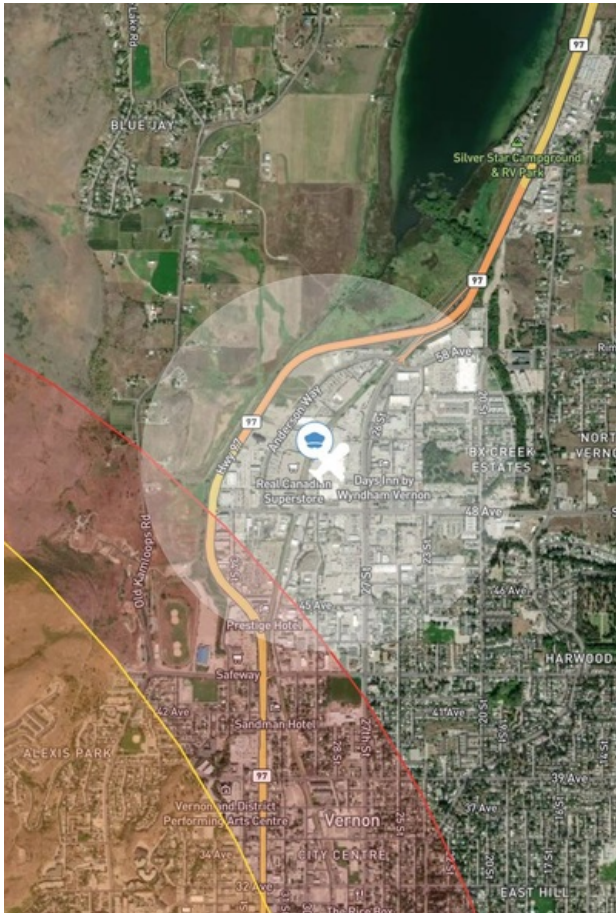
For the complete Terms & Conditions, see

<https://rpswilco.com/#/tnc>

## Included

- Site Survey
- Obstacles (if available)
- Nearby Aerodromes
- Canadian Aviation Regulations
- GFA
- Aerodrome Supplements
  - METAR & TAF (if available)
  - NOTAMs
  - CFS



## Flight Map



## RPAS Specification

- **Manufacturer:**  
MAAC
- **Model:**  
MODELAIRPLANE
- **Registration Number:**
- **Eligible for advanced operations:**  
No
- **Manufacturer RPAS safety assurance:**
  - **Controlled Airspace:** N/A
  - **Near People:** N/A
  - **Over People:** N/A

## MAP Details

	Latitude	Longitude
 <b>MODEL</b>	50° 17' 3.00" N ( 50.284 )	119° 16' 9.20" W ( -119.269 )
 <b>Pilot</b>	50° 17' 6.60" N ( 50.2852 )	119° 16' 12.80" W ( -119.2702 )

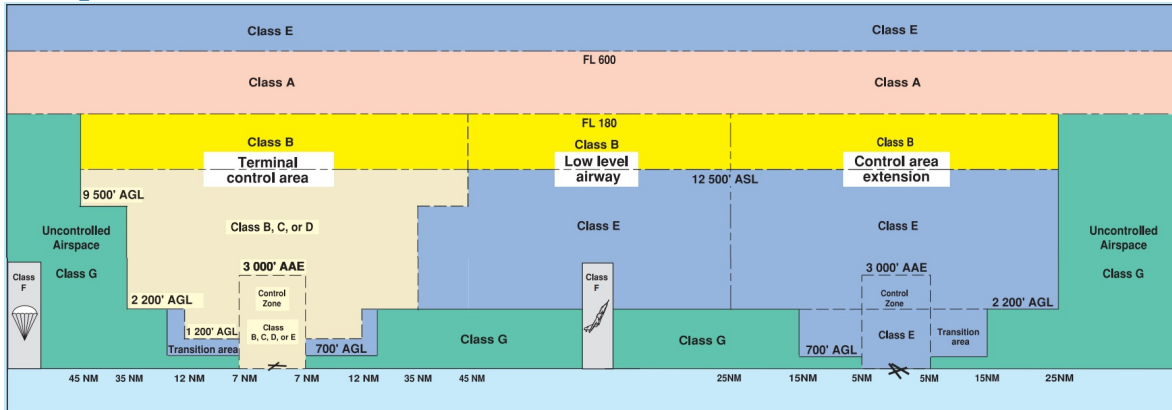


Sign Up Today!

**RPAS CENTRE CANADA**

Canada's **#1** FREE Drone Training Hub

## Airspace Classification



## Overlying Airspaces

Class	Name	Floor	Ceiling
E	Kamloops, BC TA	1600AGL	12500MSL
B	Kamloops, BC TA	12500MSL	18000MSL
E	Williams Lake, BC CAE	8000MSL	12500MSL
B	Williams Lake, BC CAE	12500MSL	18000MSL
E	Kelowna/Penticton, BC TA	700AGL	12500MSL
B	Kelowna/Penticton, BC TA	12500MSL	18000MSL
E	Kelowna/Penticton XPNDR MANDTRY	6500MSL	12500MSL
E	T602 Airway MEA: 12600MSL	2200AGL	12600MSL
B	T602 Airway MEA: 12600MSL	12600MSL	18000MSL
E	T646 Airway	2200AGL	12500MSL
B	T646 Airway	12500MSL	18000MSL
E	Kelowna XPNDR MANDTRY	3500MSL	12500MSL

## Nearest Aerodromes & Distance from Operation

VERNON (CYVK - AERODROME/HELIPORT - Cert)	Lat: 50.246	Long: -119.332	6.158KM	3.33NM	SW
WILDLIFE (CVW2 - WATERDROME - )	Lat: 50.244	Long: -119.344	6.943KM	3.75NM	SW
WINFIELD (WOOD LAKE) (CAY9 - WATERDROME - )	Lat: 50.05	Long: -119.4	27.654KM	14.93NM	S
KELOWNA (CYLW - AERODROME/HELIPORT - Cert)	Lat: 49.957	Long: -119.378	37.197KM	20.08NM	S
KELOWNA (ARGUS) (CRG2 - HELIPORT - Reg)	Lat: 49.961	Long: -119.446	38.08KM	20.56NM	S

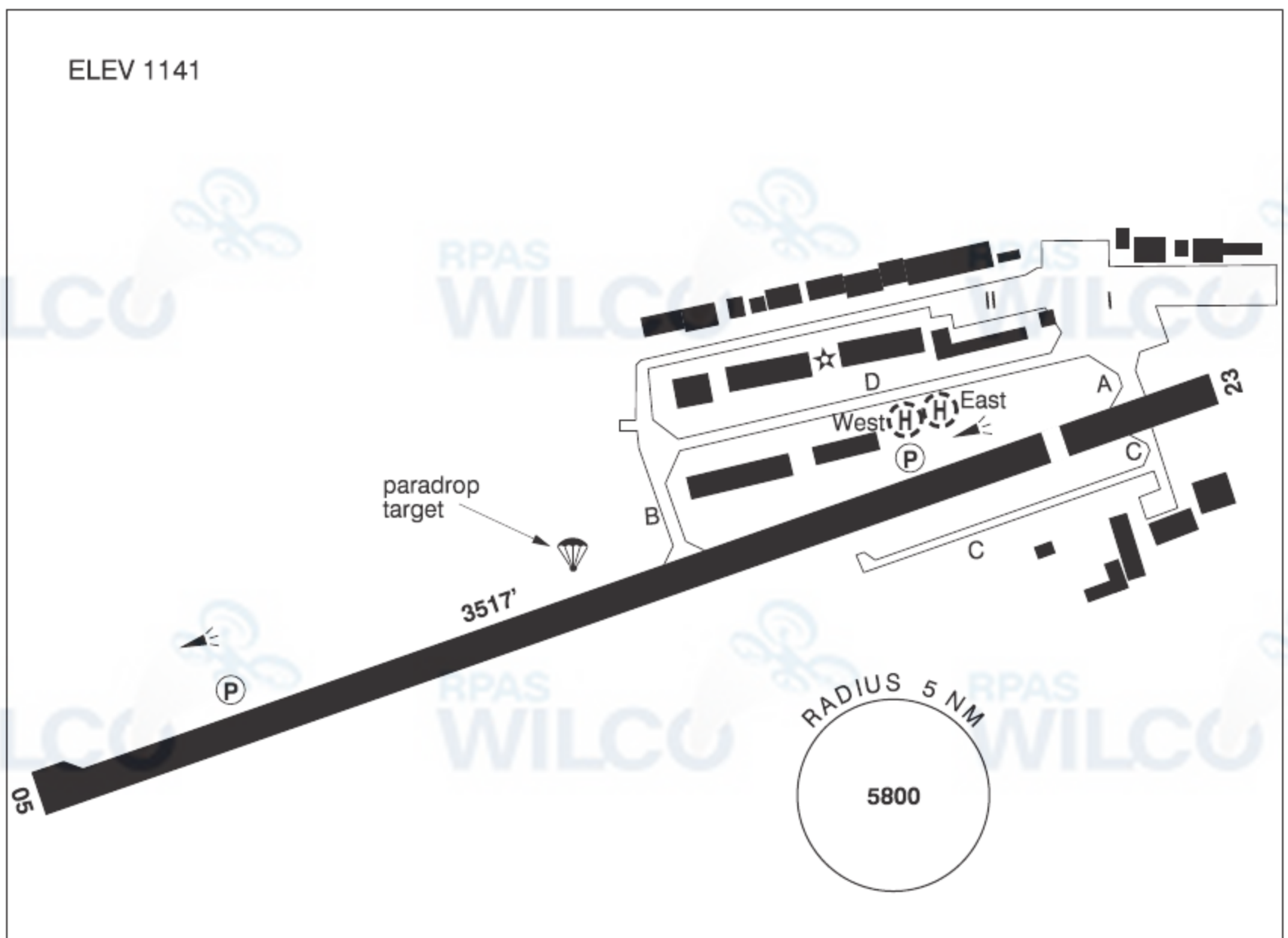


## BRITISH COLUMBIA

## AERODROME/FACILITY DIRECTORY

## VERNON BC

CYVK



<b>REF</b>	N50 14 45 W119 19 54 1.8SW 16°E (2013) UTC-8(7) Elev 1141' A5005 LO2 CAP
<b>OPR</b>	Corp of the City of Vernon 250-545-3035 1530-2400Z† Mon-Fri Cert
<b>PF</b>	B-1 C-2,3,4,5,6
<b>FLT PLN</b>	<b>FIC</b> Kamloops 866-WXBRIEF (Toll free within Canada) or 866-541-4101 (Toll free within Canada & USA) <b>WX</b> AUTO (see COMM) WxCam
<b>SERVICES</b>	<b>FUEL</b> 100LL (Self Serve, Visa, Mastercard, debit), JA, SP, Jet A call out chg may be levied after hrs 250-309-CYVK (2985) <b>S</b> 2,3,4,5
<b>RWY DATA</b>	Rwy 05(054°)/23(234°) 3517x75 ASPH Thld 23 displ 456' Rwy 23 down 0.31%
<b>RWY CERT</b>	Rwy 05/23 AGN II
<b>TWY CERT</b>	Twy C AGN I
<b>TWY</b>	Twy C day use only.
<b>RCR</b>	OPR 250-309-2985 Ltd win maint 16-24Z† Mon-Fri O/T chg may be levied.
<b>HELI DATA</b>	Parking Pads East & West: 25' x 25' CONC Max heli overall length 57.4' Heli must park hdg E/W. Additional itinerant heli prkg on grass E of heli pads.
<b>LIGHTING</b>	05-(TE ME) P1 3.5°, 23-(TE ME) P1 4° ARCAL-122.8 type K.
<b>COMM</b>	<b>MF</b> UNICOM ltd hrs O/T tfc 122.8 5NM 4100 ASL (CAR 602.98) Exc area within class "D" airspace. <b>AUTO</b> 123.175

## BRITISH COLUMBIA

## AERODROME/FACILITY DIRECTORY

## VERNON BC (Cont'd)

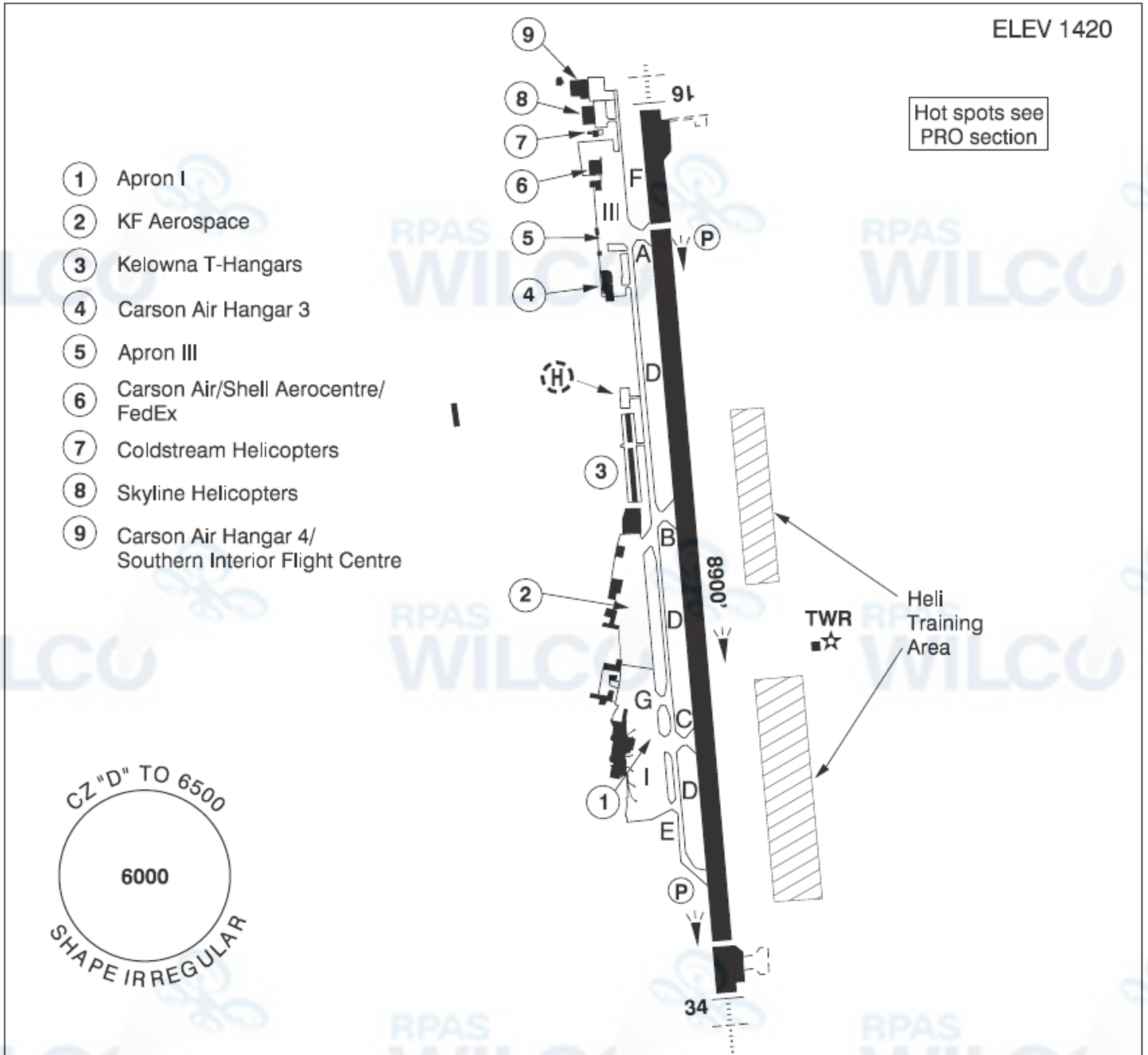
CYVK

<b>NAV</b> <b>NDB</b>	6K 302 (M) N50 21 00 W119 15 36 Pvt
<b>RESTRICTIONS</b>	<b>OPERATING RESTRICTIONS</b> 1. Pursuant to CARS 602.96(3)(D), not certified for ngt ops unless S2 beacon is oprg.
<b>PRO</b>	Day: Circuit hgt 2400 ASL. <b>Night: Rgt hand circuits rwy 05</b> (CAR 602.96). <b>Circuit hgt 3000 ASL.</b> Heli follow fixed-wing circuit procedures. Heli prkg pads accessed via rwy, hover taxi to pads.
<b>CAUTION</b>	Only pilots familiar with lcl terrain should use this aprt dur hrs of darkness. Marked fence parallels & lies within 200' of centreline of apch to Rwy 05. Extv parajumping in area. Glider activity ocsl to 12,500 ASL & ultra-light activity at A/D. Water A/D 0.5NM SW tfc at 1600 ASL. Daily radiosonde balloon launches fr N50 17 00 W119 16 00 (aprx 3.3NM NNE OF AD), with an ascent rate of 1000 ft/min btwn the hrs of 1115-1345Z & 2315-0145Z.



KELOWNA BC

CYLW



<b>REF</b>	N49 57 26 W119 22 41 6.2NE 15°E (2024) UTC-8(7) Elev 1420' A5005 LO2 HI3 CAP RCAP
<b>OPR</b>	City of Kelowna 250-807-4350 H24 Cert
<b>PF</b>	A-1,2,3,6,7 C-4,5
<b>CUST</b>	AOE/30 (120 with staged off-loading) 888-226-7277
<b>FLT PLN</b>	<p><b>FIG</b> Kamloops 866-WXBRIEF (Toll free within Canada) or 866-541-4101 (Toll free within Canada &amp; USA)</p> <p><b>WX</b> METAR AUTO H24 (see COMM) WxCam TAF H24, issue times: 01, 07, 13, 19Z.</p>
<b>SERVICES</b>	<p>Kelowna Shell Aerocentre</p> <p><b>FUEL</b> 100LL, JA-1 (FSII avbl)</p> <p><b>OIL</b> All</p> <p><b>S</b> 1,2,3,4,5,6</p> <p><b>ARFF</b> DESIGNATED CAT 7 1330-0830Z†, O/T 2 hr PN, aprt clsd to acft 20 seats &amp; abv, exc for diversions or as an altn A/D without PPR. Discrete emerg freq 122.675.</p> <p><b>SUP FL</b> LHOX, D-Ice, ADI</p> <p><b>JASU</b> CEA2, CE3, CE14</p> <p><b>PVT ADV</b> Kelowna Shell Aerocentre 123.0 250-765-8155</p> <p><b>MIL CON</b> Kelowna Shell Aerocentre (Shell) 250-765-8155</p>

## BRITISH COLUMBIA

## AERODROME/FACILITY DIRECTORY

## KELOWNA BC (Cont'd)

CYLW

<b>HELI DATA</b>	North Parking Pad: 90' dia ASPH South Parking Pad: 90' dia ASPH Max heli overall length 75'. Heli prkg area to be accessed via rwy/twy. PN, ctc OPR.
<b>RWY DATA</b>	Rwy 16(160°)/34(340°) 8900x200 ASPH. Thld 16 displ 1200' Thld 34 displ 400' Rwy 16 down 0.9% first 7237' Rwy 34 down 0.6% first 1663'
<b>RWY CERT</b>	Rwy 16 RVR 1200(1/4sm)/Rwy 34 RVR 1200(1/4sm) AGN V
<b>TWY CERT</b>	Twy: A, B, C, E AGN IV Twy: D, G AGN IIIB Twy F AGN I
<b>TWY</b>	Twy F rstd to acft with wingspans less than 79'. Twy D & twy E rstd to acft with wingspans less than 125'.
<b>APRON</b>	Apron I: Fixed wing acft only; heli prkg not auth. Prkg rstd to scheduled and non-scheduled airline tfc. Acft not auth to perform 180° turns. Jet acft pushback all prkg positions. Turbo-prop acft cw turn for power out or pushback only. All acft ctc ATC and advs intentions prior to push-back or turn out fr the gate. Apron III: Fixed wing acft only; heli prkg not auth. Prkg for commercial opr and acft over 12,500 lbs 3 hr PPR. Lgt acft must remain in designated areas at all times. KF Aerospace apron: PPR Shell Aerocentre: Heli prkg PPR.
<b>RCR</b>	Twr 250-765-3426 CRFI, PLR/PCN RSC issued 1200-0801Z± O/T 1hr PN When CRFI falls blw 0.25, rwy avbl for take-off only, PN. Ctc Opr.
<b>LIGHTING</b>	16-AR(TE ME) P2 3.2°, 34-AK(TE ME) P2 PAPI limitation/restriction. PAPI Rwy 16 to be used only within 3NM of thld; PAPI Rwy 34 to be used only within 2NM of thld Twy F RR
<b>COMM</b>	
<b>RCO</b>	Penticton rdo 119.6 (RAAS) 0630-1330Z± Pacific rdo 122.5 (FISE) 126.7 (bcst)
<b>ATIS</b>	127.5 1330-0630Z±
<b>GND</b>	121.7 1330-0630Z±
<b>TWR</b>	119.6 292.2 (V) 1330-0630Z± (emerg only 250-765-3426)
<b>MF</b>	Penticton rdo 119.6 0630-1330Z± CZ shape irregular 6500 ASL, comm blind spots all quads (CAR 602.98)
<b>AWOS</b>	127.5
<b>NAV</b>	
<b>NDB</b>	LW 257 (M) N50 03 39 W119 24 59 RUTLAND EX 374 (L) N49 56 23 W119 22 32 WESTBANK YWB 389 (M) N49 48 38 W119 37 50
<b>DME</b>	ILW 111.3 Ch 50 N49 57 46 W119 22 37 (1415')
<b>ILS</b>	ILW 111.3 (Rwy 16)
<b>PRO</b>	Pilots should refer to Canadian Airport Charts (CAC) to obtain details on established hot spots, prior to operating on maneuvering areas. CAC are available for free on the NAV CANADA website. See VTPC for arr/dep rtes & pro. Day: circuit hgt 2500 ASL rgt hand circuits Rwy 34 (CAR 602.96). Night: circuit hgt 3000 ASL, follow VTPC night circuit pro. See VTPC. Multilateration: Leave transponders in transmit mode at all times while airborne or on rwy. Keep transponders off or in standby mode on aprons and while taxiing. Due to jet blast concerns acft using the turnaround bays shall turn counter-clockwise at Thld 16 and clockwise at Thld 34.
<b>CAUTION</b>	Under Visual Flight Rules it is recommended that only pilots familiar with the lcl area use this A/D dur hrs of darkness. Ngt ops not recommended for VFR Operations unless all 6 hazard beacons oprg. All turns to be completed within the perimeter of the hazard bcns. Ocsl glider activity to 12,500' vic Vernon A/D. Heli Training Areas: uneven terrain, numerous obstacles Blast fence 360' fr Thld 16 on extended rwy centreline, 1438' ASL (14 AGL), lgt not marked. Hi terrain reduces operational length of Rws 34 and 16 PAPI.



## BRITISH COLUMBIA

## AERODROME/FACILITY DIRECTORY

## KELOWNA (ARGUS) BC (Heli)

CRG2

<b>REF</b>	N49 57 41 W119 26 46 2.1NNW 16°E (2014) UTC-8(7) Elev 1877' A5005	
<b>OPR</b>	Argus Properties 250-763-6789 Reg PPR	
<b>FLT PLN</b>		
<b>FIC</b>	Kamloops 866-WXBRIEF (Toll free within Canada) or 866-541-4101 (Toll free within Canada & USA)	
<b>HELI DATA</b>	FATO/TLOF 105' x 51' CONC Safety Area 105' x 51'	
<b>RCR</b>	Opr	
<b>COMM</b>		
<b>RCO</b>	Penticton rdo 119.6 (RAAS) 0630-1330Z† Pacific rdo 122.5 (FISE) 126.7 (bcst)	
<b>TWR</b>	Kelowna 119.6 1330-0630Z†	
<b>MF</b>	Penticton rdo 119.6 0630-1330Z† Kelowna CZ shape irregular 6500 ASL, comm blind spots all quads (CAR 602.98)	
<b>PRO</b>	Arr/dep 154° fr heli, day use only. Arr/dep 344° fr heli, day use only.	



# Canadian Aviation Regulations

## Division III — General Operating and Flight Rules

For full listing please visit : <https://laws-lois.justice.gc.ca/eng/regulations/SOR-96-433/FullText.html#s-901.27>

### Visual Line-of-sight

- **901.11 (1)** Subject to subsection (2), no pilot shall operate a remotely piloted aircraft system unless the pilot or a visual observer has the aircraft in visual line-of-sight at all times during flight.
- **(2)** A pilot may operate a remotely piloted aircraft system without the pilot or a visual observer having the aircraft in visual line-of-sight if the operation is conducted in accordance with a special flight operations certificate — RPAS issued under section 903.03.

### Procedures

- **901.23 (1)** No pilot shall operate a remotely piloted aircraft system unless the following procedures are established:
  - **(a)** normal operating procedures, including pre-flight, take-off, launch, approach, landing and recovery procedures; and
  - **(b)** emergency procedures, including with respect to
    - **(i)** a control station failure,
    - **(ii)** an equipment failure,
    - **(iii)** a failure of the remotely piloted aircraft,
    - **(iv)** a loss of the command and control link,
    - **(v)** a fly-away, and
    - **(vi)** flight termination.
- **(2)** If the manufacturer of the remotely piloted aircraft system provides instructions with respect to the topics referred to in paragraphs (1)(a) and (b), the procedures established under subsection (1) shall reflect those instructions.
- **(3)** No pilot shall conduct the take-off or launch of a remotely piloted aircraft unless the procedures referred to in subsection (1) are reviewed before the flight by, and are immediately available to, each crew member.
- **(4)** No pilot shall operate a remotely piloted aircraft system unless the operation is conducted in accordance with the procedures referred to in subsection (1).

### Site Survey

**901.27** No pilot shall operate a remotely piloted aircraft system unless, before commencing operations, they determine that the site for take-off, launch, landing or recovery is suitable for the proposed operation by conducting a site survey that takes into account the following factors:

- **(a)** the boundaries of the area of operation;
- **(b)** the type of airspace and the applicable regulatory requirements;
- **(c)** the altitudes and routes to be used on the approach to and departure from the area of operation;
- **(d)** the proximity of manned aircraft operations;
- **(e)** the proximity of aerodromes, airports and heliports;
- **(f)** the location and height of obstacles, including wires, masts, buildings, cell phone towers and wind turbines;
- **(g)** the predominant weather and environmental conditions for the area of operation; and
- **(h)** the horizontal distances from persons not involved in the operation.

### Operations at or in the Vicinity of an Aerodrome, Airport or Heliport

- **901.47 (1)** No pilot shall operate a remotely piloted aircraft at or near an aerodrome that is listed in the *Canada Flight Supplement* or the *Water Aerodrome Supplement* in a manner that could interfere with an aircraft operating in the established traffic pattern.
- **(2)** Subject to section 901.73, no pilot shall operate a remotely piloted aircraft at a distance of less than
  - **(a)** three nautical miles from the centre of an airport; and
  - **(b)** one nautical mile from the centre of a heliport.
- **(3)** No pilot shall operate a remotely piloted aircraft at a distance of less than three nautical miles from the centre of an aerodrome operated under the authority of the Minister of National Defence unless the operation is conducted in accordance with a special flight operations certificate — RPAS issued under section 903.03.

### Records

- **901.48 (1)** Every owner of a remotely piloted aircraft system shall keep the following records:
  - **(a)** a record containing the names of the pilots and other crew members who are involved in each flight and, in respect of the system, the time of each flight or series of flights; and
  - **(b)** a record containing the particulars of any mandatory action and any other maintenance action, modification or repair performed on the system, including
    - **(i)** the names of the persons who performed them,
    - **(ii)** the dates they were undertaken,
    - **(iii)** in the case of a modification, the manufacturer, model and a description of the part or equipment installed to modify the system, and
    - **(iv)** if applicable, any instructions provided to complete the work.
- **(2)** Every owner of a remotely piloted aircraft system shall ensure that the records referred to in subsection (1) are made available to the Minister on request and are retained for a period of
  - **(a)** in the case of the records referred to in paragraph (1)(a), 12 months after the day on which they are created; and
  - **(b)** in the case of the records referred to in paragraph (1)(b), 24 months after the day on which they are created.
- **(3)** Every owner of a remotely piloted aircraft system who transfers ownership of the system to another person shall, at the time of transfer, also deliver to that person all of the records referred to in paragraph (1)(b).